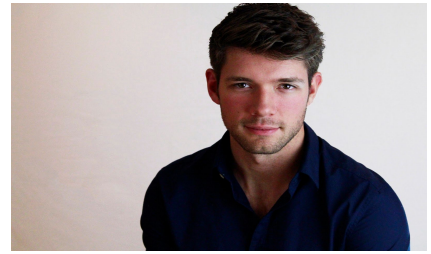


Tristan Rewald

tristanrewald.com
tristan.rewald@gmail.com
734. 277.6040
EMC



Hair: Brown

Eyes: Brown

Height: 6'1

Vocal range: D2-G4

THEATER CREDITS:

The Crucible	<i>dir. Paul Mullins</i>	Rev. John Hale	Connecticut Repertory Theatre
A Doll's House	<i>dir. Mary O'Brady</i>	Torvald	Monomoy Theatre
As You Like It	<i>dir. Terry Layman</i>	Oliver	Monomoy Theatre
The Cherry Orchard	<i>dir. John Miller-Stephany</i>	Yasha	Connecticut Repertory Theatre
Henry IV Part I & II	<i>dir. Madeline Sayet</i>	Vernon	Connecticut Repertory Theatre
You Can't Take It With You	<i>dir. MJ McGann</i>	Boris Kolenkhov	Monomoy Theatre
Proof	<i>dir. Steve DeBruyne</i>	Hal	The Dio Theatre
Mystery of Edwin Drood	<i>dir. Paul Mullins</i>	Horace	Connecticut Repertory Theatre

FILM CREDITS:

Insomniacs	(Feature)	<i>dir. Christopher Velent</i>	Lead
Novana	(Short)	<i>dir. Ryan Freeland</i>	Lead
Exit	(Short)	<i>dir. Matthew Bilmes</i>	Supporting
Jordan Jones	(Short)	<i>dir. Natalie Lomske</i>	Lead

TRAINING:

MFA Acting; University of Connecticut Class '20

Acting:
Dale AJ Rose
Vincent Tycer

Voice:
Jennifer Scapetis-Tycer
Julie Foh
Barbara Houseman

Movement:
Greg Webster
Marie Percy

Diana Castle's Imagined Life Studio, *instr.* Faline England

BA Humanities, Film Theory & Production; University of Michigan Class '15

SPECIAL SKILLS:

Stage Combat (Broadsword, Rapier & Dagger, Quarterstaff, Unarmed)/ Parkour/ Basic training in Aerial Silks and Trapeze/ Yoga/ Conversational: Polish, German/ Accents: British RP, Cockney, Slavic, Non-Rhotic Southern, Rhotic Southern /